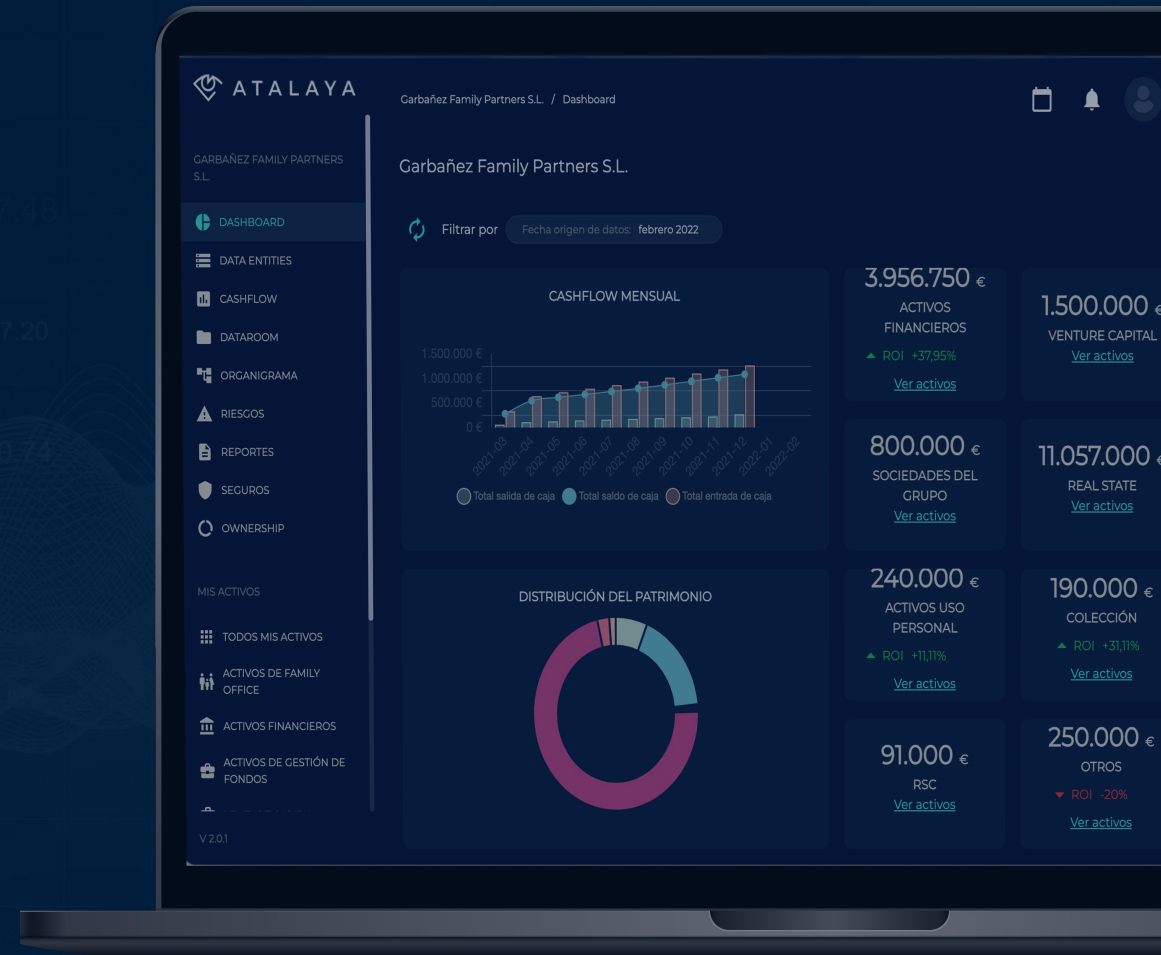




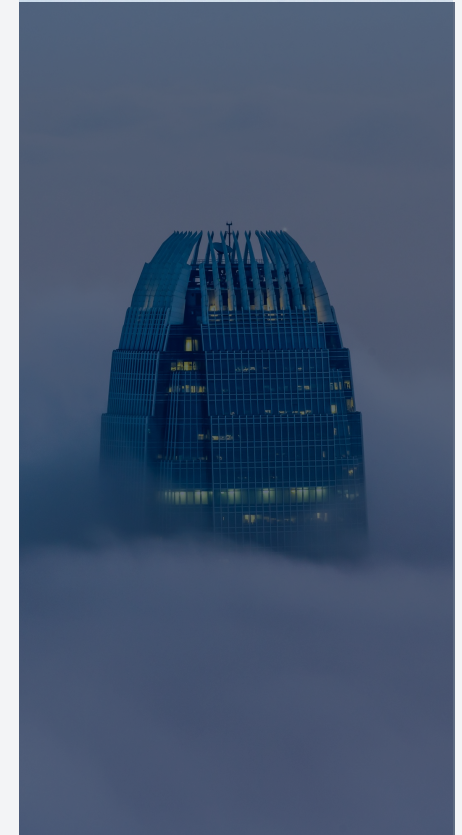
ATALAYA AI WEALTH

# Wealth management of today for tomorrow.



***Atalaya AI Wealth*** helps the Family Office to structure data, identifying trends and opportunities to protect and increase wealth.

**We work with the family and their advisors to achieve their objectives.**

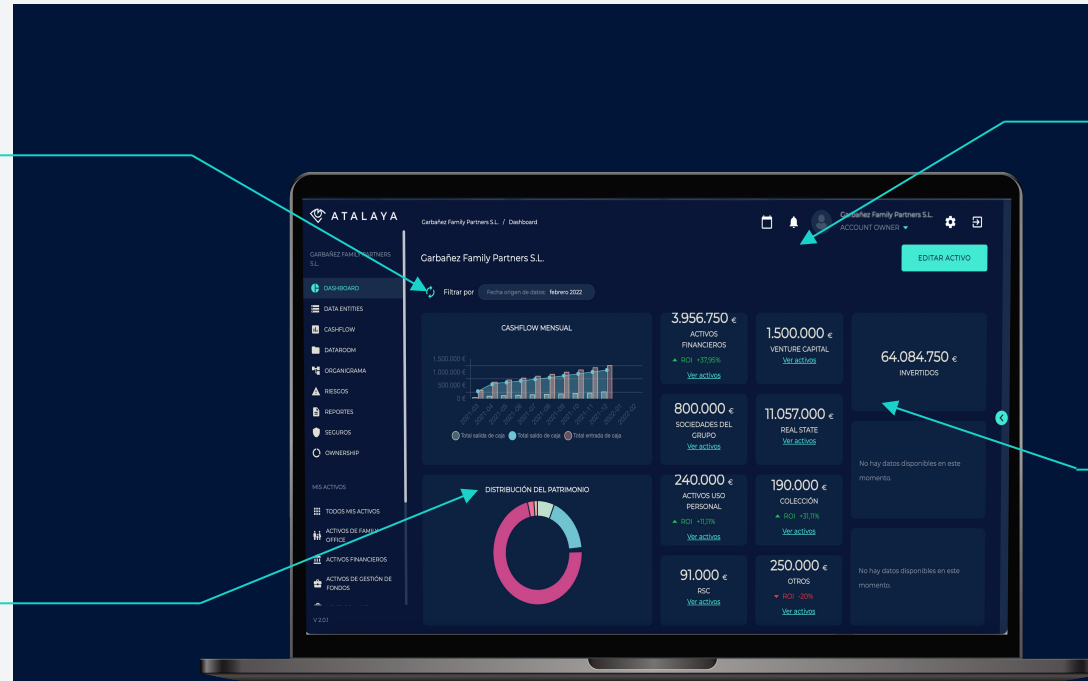


## NEW OPPORTUNITIES

Data enables us to identify new opportunities and assess the risk to make **better decisions**.

## YOUR DATA ALWAYS UPDATED

We ensure the traceability of assets and performance in **real time** so that you do not miss any detail of what is happening in your fund.



## SECURITY

Your **information** will always be **encrypted** with the highest security standards.

## ACCESS CONTROLS

You Have full **control of your data**. Manage access and manage Access and permissions to specific information.

**Wealth, advisors and assets.**

**Everything within your reach.**

---

CYBERSECURITY AND ACCESS

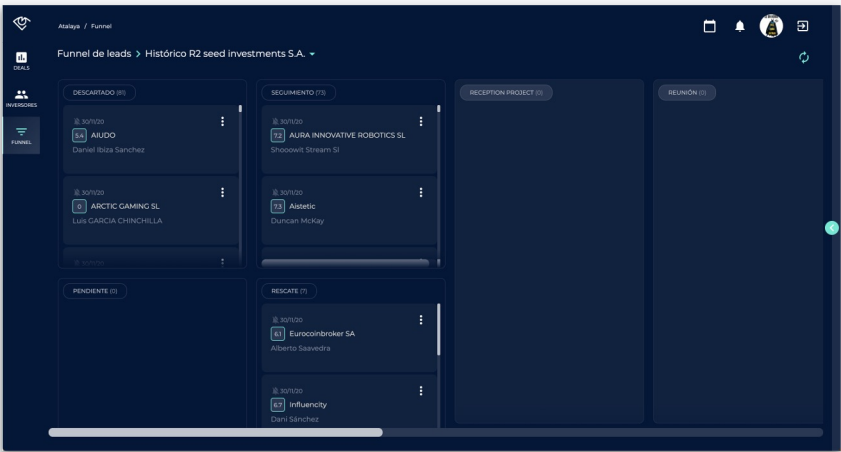
**The highest security standards  
for all your data.**

---

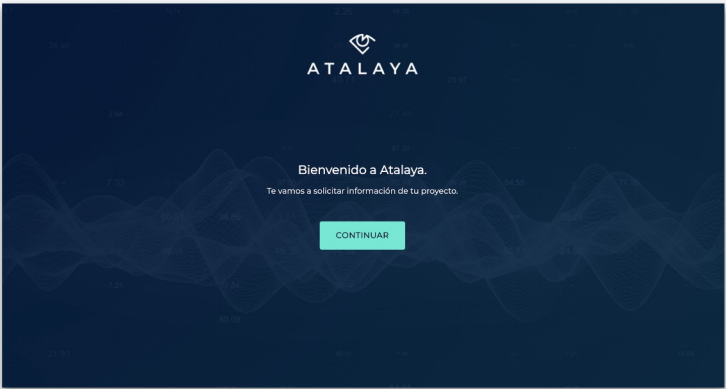
# ATALAYA AI WEALTH

Atalaya AI Wealth has been developed to enable full encryption of files and documents.

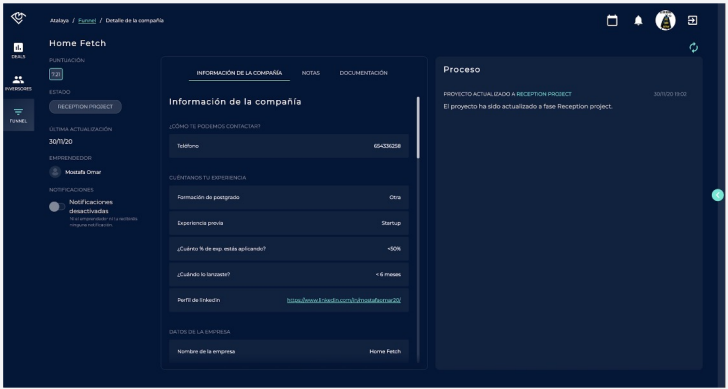
We work with the highest security standards, keeping information organised at different levels of access.



Atalaya Backoffice (Private access for users).



Atalaya Forms (Public access).



Atalaya Third-Party-Access.

**We protect your data, you  
decide who can see it.**

Manage user Access and  
permissions.



All your folders encrypted with the  
highest security standards.



Access personalization.



Possibility to give third party  
access to specific assets.



Access to the platform at  
different user levels.



TEAM AND ADDED VALUE

**An experienced team to  
develop your assets.**

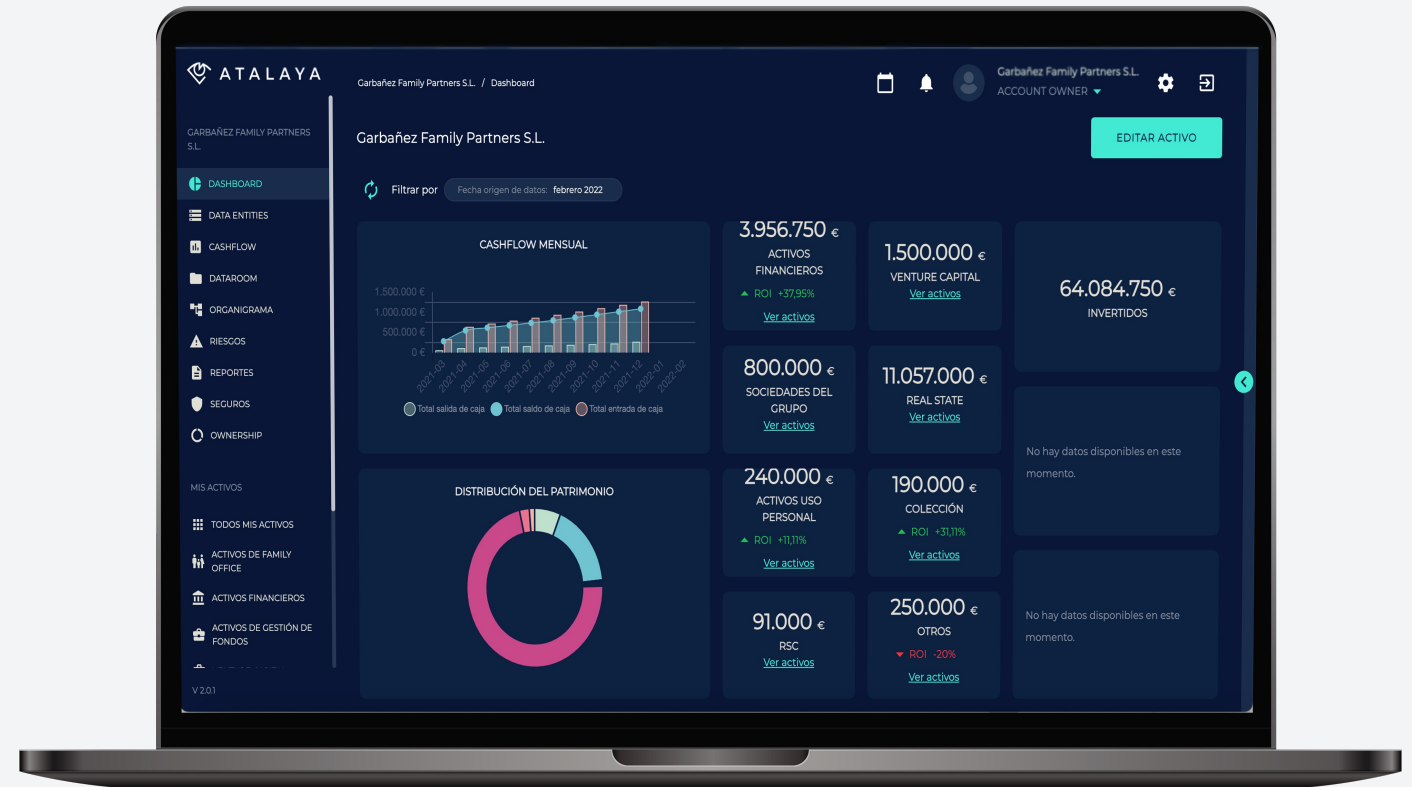
---



## Working with you

Our team at AI Wealth understand your needs and work with the family and advisors to identify the trends, opportunities and threats to strengthen your wealth.

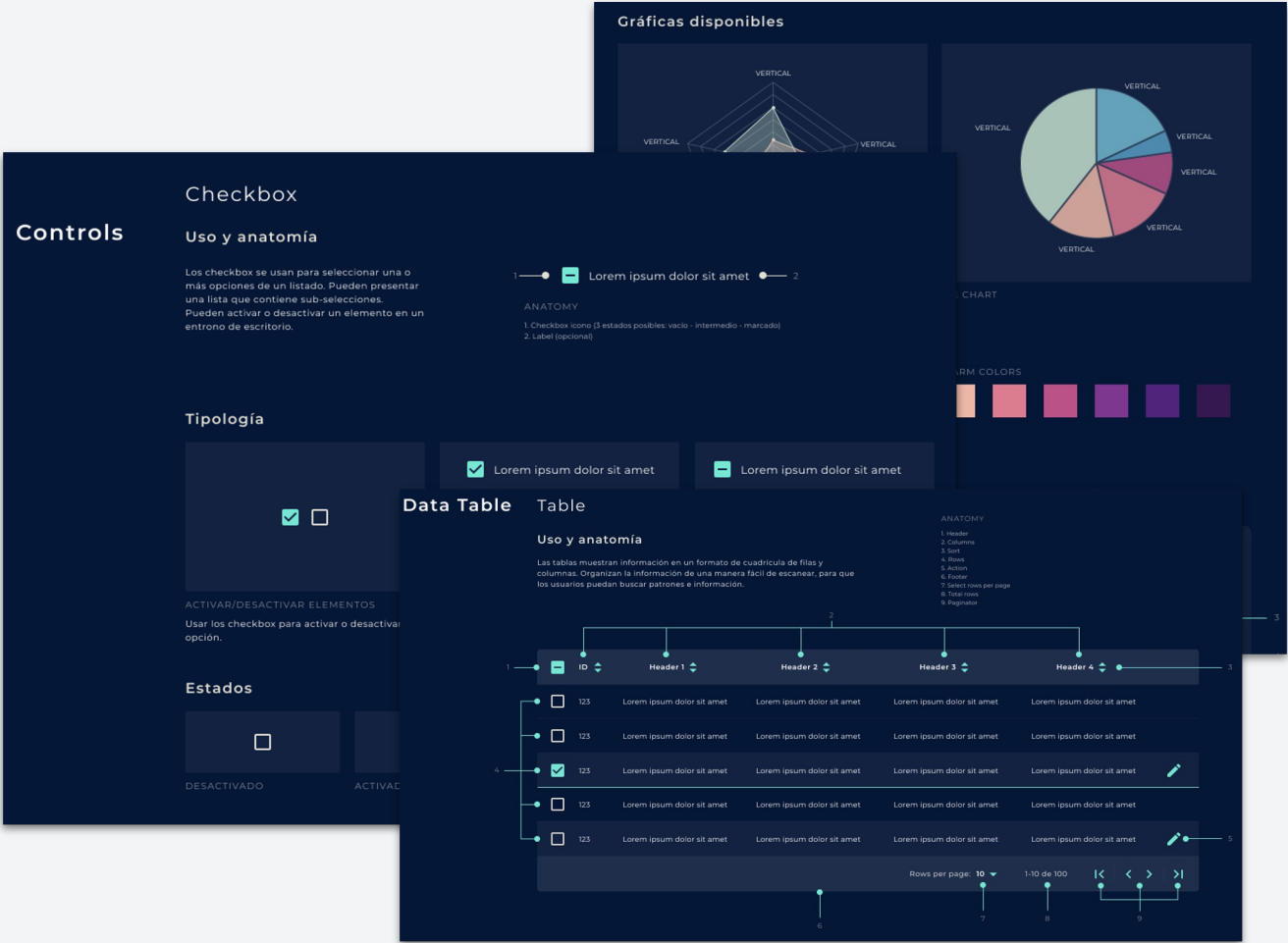
Our specialist team carries out the migration and integration of all your data. Quick and easy.



# Customization

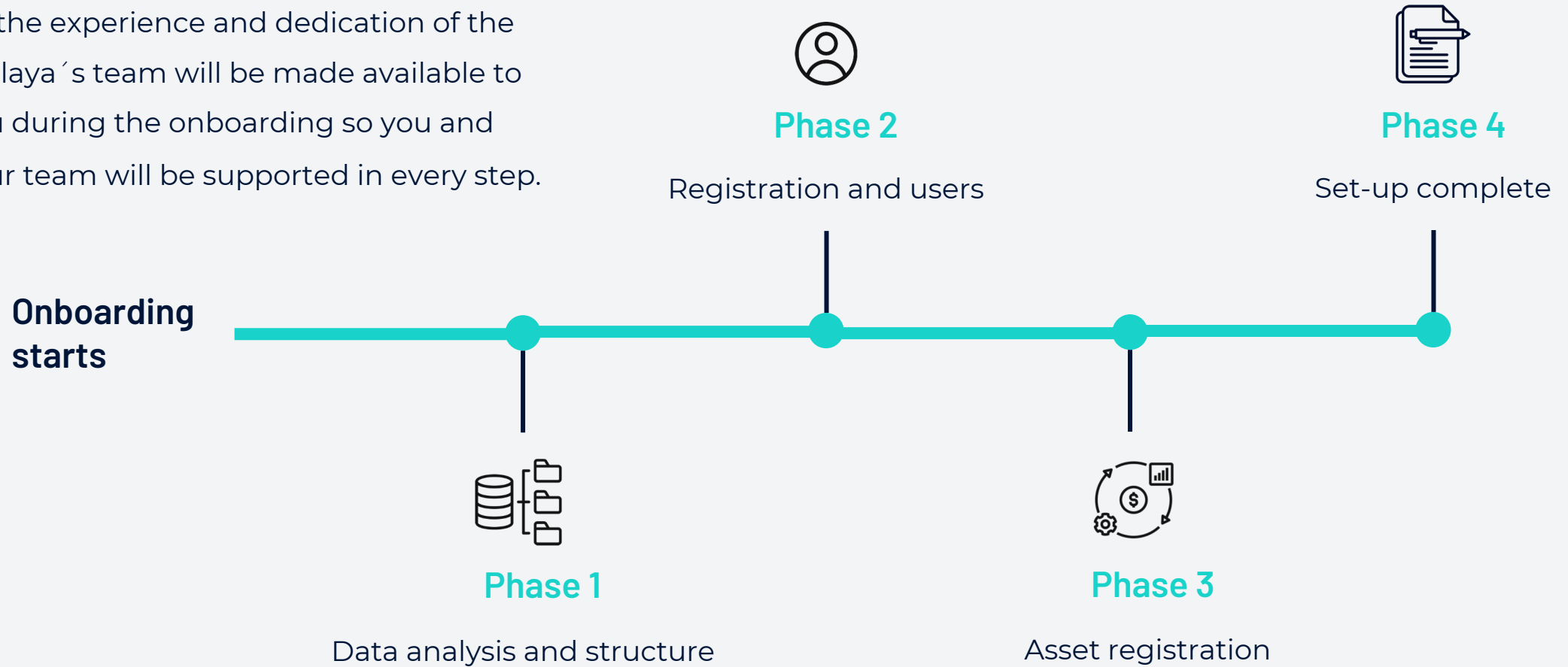
We have developed a digital environment that fits 100% with your needs and objectives., customizing the tool for you.

The Atalaya AI Wealth interface is highly intuitive, so the learning curve is short and you can start getting the most out of your data.



## Onboarding: 8 weeks to generate a positive impact on your organization.

All the experience and dedication of the Atalaya's team will be made available to you during the onboarding so you and your team will be supported in every step.



ATALAYA AI WEALTH

**We put your data to work for you to make the  
best decisions in the shortest time possible.**



Experts in getting the most from your data.



All the management in a single tool.



All your information up to date and at your fingertips at any time.



Separate Access for different profiles.



Experienced technical team making it easier.



Great user experience.

## Simplifying the management

With Atalaya you will be able to manage your assets in a comprehensive way with a single tool.

From the family organisation chart to each of the categorised assets.



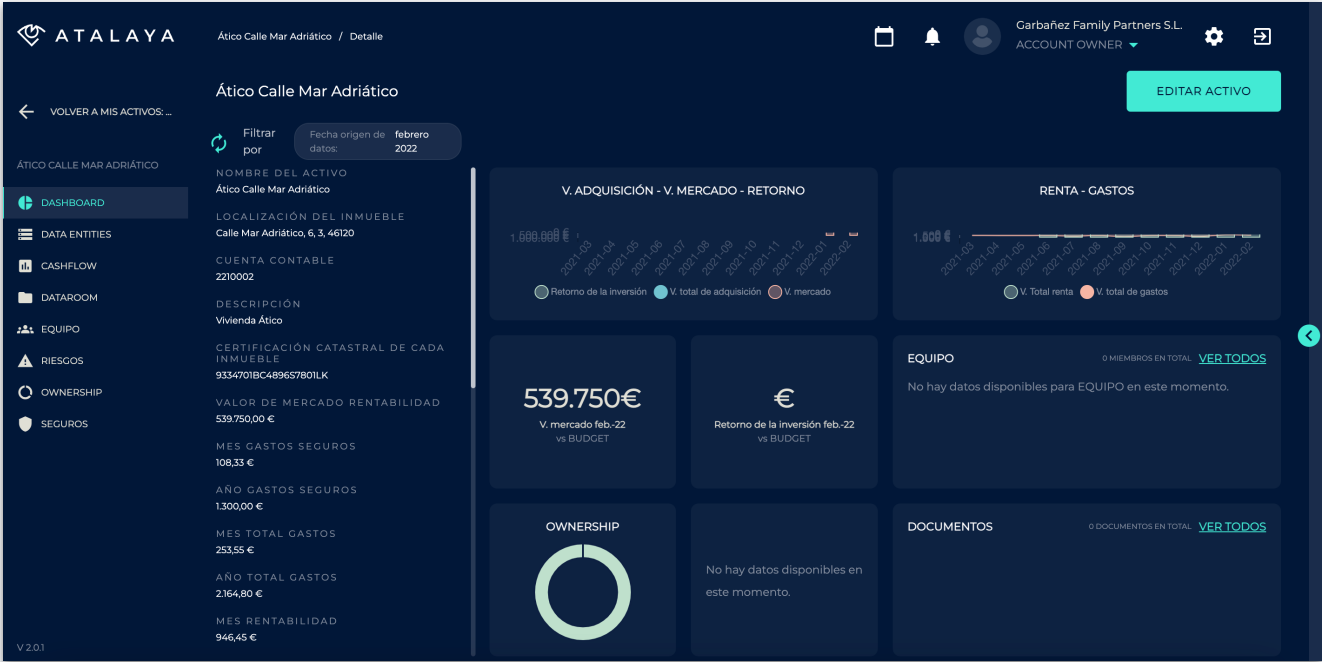
[illegible]



Monitoring investment.

You will be able know in detail all the KPI's of an asset, its expenses, profitability and specific details.

The most complete information about your assets with a great user experience.



**Atalaya AI Wealth helps you make the best  
decisions to grow your family's wealth.**

---

## We want to work with you

We collaborate with you to grow the wealth of the family for future generations, managing the complexity of the data in an efficient way that allows us to identify trends and unique opportunities for you.

There is a new way of doing things.



